



TRESCO CONSOLES

Accessories Catalog

December 09 2024

INDEX

- 01** Adjustable Cable Management
- 02** Adjustable Worksurface
- 03** Articulating LED Tasklight
- 04** Articulating Wall Mount
- 05** Automatic Transfer Switch
- 06** Cabinets and Pedestals
- 07** Cable Management
- 08** Conference - Workstation Table
- 09** Console Bay Lighting
- 10** Copper Grounding Bar Kit
- 11** Data Management
- 12** Directional Speakers
- 13** Electro Mechanical Articulating Monitor Arm
- 14** Equipment Ventilation
- 15** Flip up-Pop Up Convenience Outlets
- 16** Heavy duty monitor mount

INDEX

- 17** Keyboard and Mouse Equipment
- 18** Multiple Monitor Arm
- 19** Multifunctional Backwall
- 20** Overview Monitor Stand
- 21** Panels PT1
- 22** Personal Environment Unit
- 23** Plug and Play Power Management
- 24** Power & Data Management (wiremold)
- 25** Power Bars
- 26** Power Management
- 27** Rack Mount Rails
- 28** Single and Dual stacked monitor arms
- 29** Universal Wall Mount
- 30** Work Surface Edge Treatment
- 31** Workstation Podium

ADJUSTABLE CABLE MANAGEMENT



LOWER POSTITION

HIGHER POSTION



FEATURES

- 01** Holds cables with up to a 1.26" diameter
- 02** Easy installation
- 03** Limited bend radius to protect cables
- 04** Dust resistant material
- 05** Small pitch for low-noise and smooth operation.



CONTROL PADS



FEATURES

- 01** Electronically actuating columns
- 02** Soft start and stop when adjusting
- 03** Single or front-back split worksurface configurations available

LIGHT WEIGHT LIFTING COLUMN



HEAVY DUTY LIFTING COLUMN



- 04** Multiple control pad options
- 05** Built-in anti-collision technology available upon request
- 06** BIFMA height range available upon request
- 07** 300W in motion, 0.1W when at rest



STANDARD BASE



MOUNTED BASE



FEATURES

- 01** Long lasting materials
- 02** Built-in touch strip for brightness adjustments
- 03** LED head can spin in its socket, swipe side to side and rotate around the end of the arm in any direction.

Material	Aluminum and plastic
Base	Diameter: 9 " / 22.86 cm
Overall	Height: 16.42 " / 41.7 cm
Dimensions	Width: 33.88 " / 85.85 cm
Cord	120 " / 22.86 cm
Light Source	9.5 Watt (475 Lumen) 100-240v Color temp: 3,500k / 4,500k CRI: 90 - Lifespan: 5,000 hours
Dimmable	Yes
Light Option	LED
Warranty	5 Years



FEATURES

- 01** Universal mount accommodates 200 x 100 to 600 x 400mm VESA mounting patterns
- 02** Extends 21.35" (542mm) from the wall
- 03** Retracts 3.00" (76mm) to save space
- 04** +15/-5° of tilt for optimal viewing angles
- 05** Up to 90 degrees of pivot allows for perfect display positioning
- 06** Design is UL listed and tested to four times stated load capacity
- 07** Includes all necessary wall and display attachment hardware
- 08** Minimum to maximum screen size: 39" to 90"
- 09** Minimum to maximum VESA pattern: 200 x 100 to 600 x 400
- 10** Weight capacity: 150Lbs.



ATS TYPE 1



FEATURES

- 01** (10) Nema 5-15R (Battery backup) output
- 02** Nema 5-15P input
- 03** Nominal Output voltage: 100v, 120v
- 04** Nominal input voltage: 100v, 120v
- 05** 8' (2.44m) cord length

ATS TYPE 2



FEATURES

- 01** (12) IEC 320 C13 (Battery backup) output
- 02** IEC 320 C14 Input
- 03** Nominal Output voltage: 208v
- 04** Nominal input voltage: 208v
- 05** 8' (2.44m) cord length



BOX / FILE



FEATURES

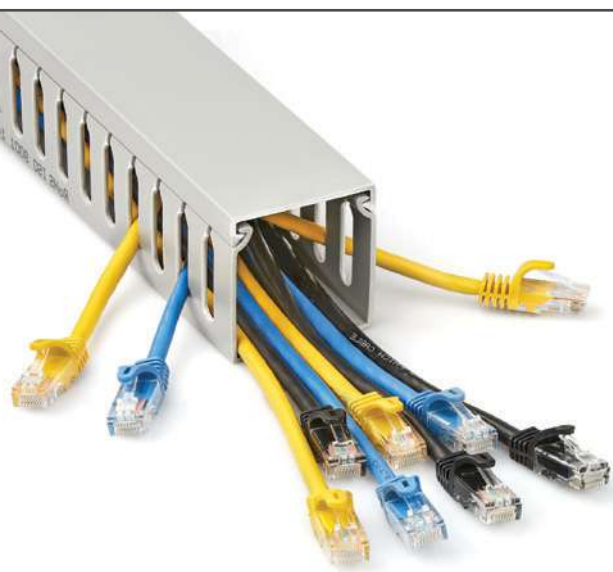
- 01** Fixed and mobile options
- 02** Customized to match console lower panel material and color
- 03** Optional seat cushion
- 04** Optional pencil tray
- 05** Size and shapes of lower storage units are customizable

BOX / BOX / FILE



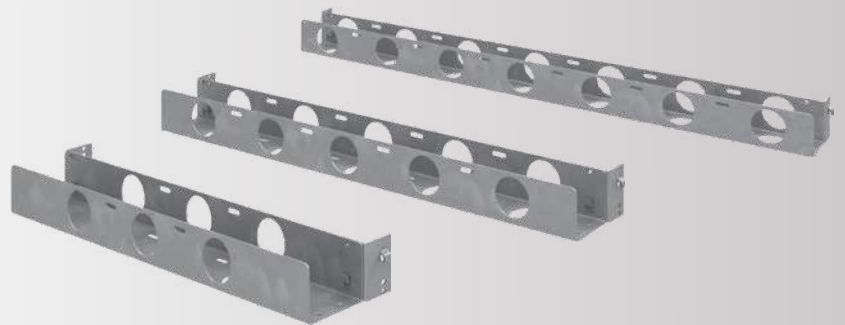
BOX / OPEN





CABLE TRAY

- 01** Flexible PVC
- 02** Open slots for cable insertion and wiring
- 03** Flame retardant and ROHS compliant



WIRE TRAY

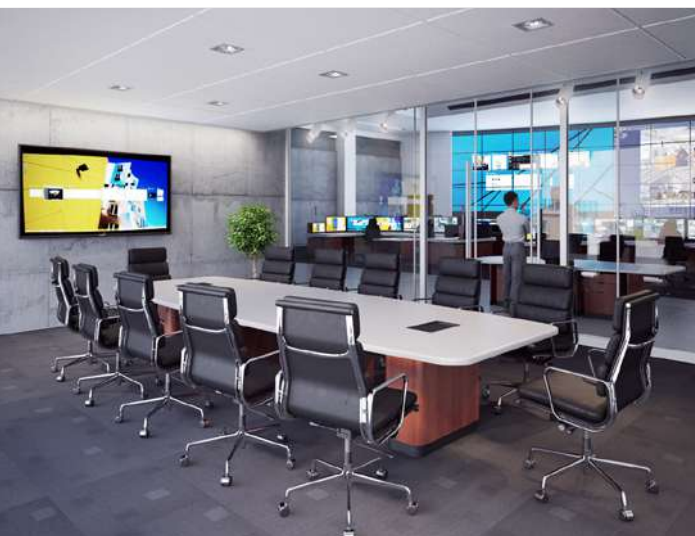
- 01** Galvanized steel
- 02** Multiple available sizes (2"x2", 2"x4", 2"x8")
- 03** Fast and intuitive installation
- 04** Easy access to cables during maintenance or troubleshooting
- 05** Organized and uncluttered cable management for a clean look inside the console



LOWERED
EQUIPMENT



RAISED
EQUIPMENT



FEATURES

- 01** Customizable size and shape
- 02** Optional electro-mechanical adjustability
- 03** Multiple finishing options and edge treatments (Wood veneers, HPL, custom inlays and solid worksurface)
- 04** Power/data integration (flip-ups or recessed grommets)



LIGHT BODY



POWER CORD



FEATURES

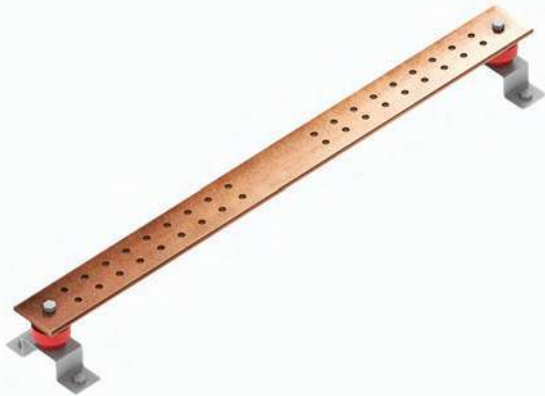
- 01** LED rigid linear light
- 02** Integrated on/off switch (not door switch)
- 03** 4000K neutral white
- 04** 4 Watt, 12 Volt
- 05** NEMA 5-15 plugin with 70" cord
- 06** ETL Listed



Allows for quick and easy connection of multiple ground points. It is widely used in both high and low power distribution cabinets, for transmission purposes, and for securing copper busbars. Additionally, it provides insulation and connection functions.

FEATURES

- 01** 1 PC SCGB-2 Copper bus bar
- 02** 2 PCs SCBLT-1 Brackets SS
- 03** 2 PCs 2015-3C Insulator or equivalent
- 04** 4 PCs 3/8-16 x .75" bolt
- 05** 3 PCs 3/8" Lock washer
- 06** Optional hole placement for customer site drilling (Must be specified at time of ordering)





SINGLE CAT6

device box



DUAL CAT6

device box



QUAD CAT6

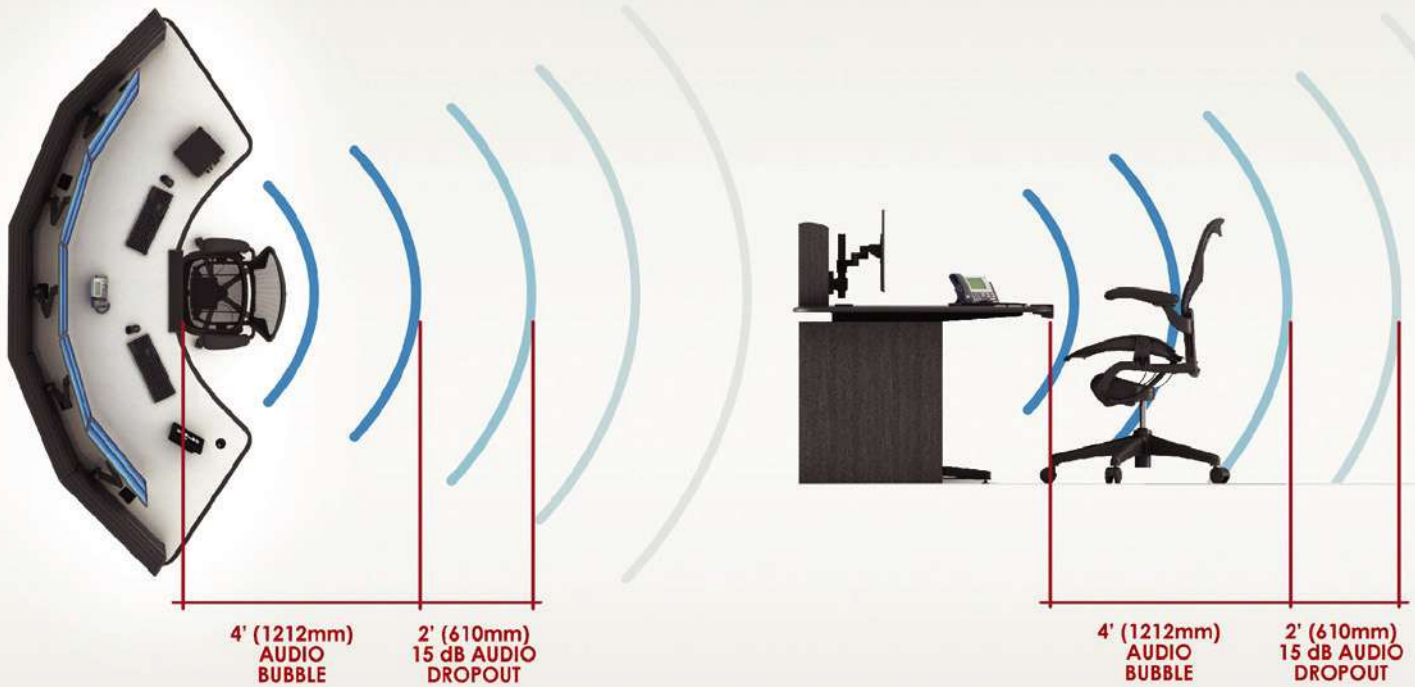
device box



FEATURES

- 01** International receptacles
- 02** Location based on client needs
- 03** Multiple data connection options
- 04** Rack mounted patch panels available upon request
- 05** Available in different colors

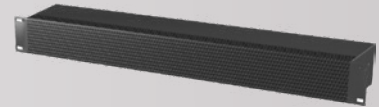
DIRECTIONAL SPEAKERS



SB-1U FEATURES

- 01** Fits into a single rack space
- 02** Isolated audio experience
- 03** Minimum: 5 watts per channel
- 04** Maximum: 25 watts per channel
- 05** Frequency: 200hz - 20khz, +/-3db

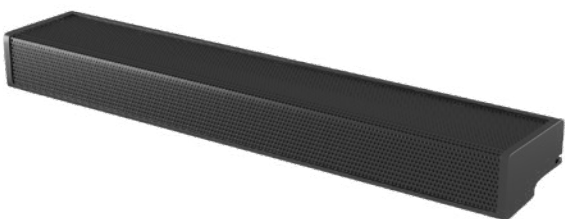
SB-1U Speaker



SB-1U IN Large Turret



EJ-22 Speaker



EJ-22 FEATURES

- 01** Aluminum enclosure
- 02** Integrated into the nosing of your worksurface
- 03** 16" x 1" drivers
- 04** 16 x 3 Watts per driver (48 Watts)

ELECTRO MECHANICAL ARTICULATING MONITOR ARMS



CONTROL PAD



FEATURES

- 01** 75mm and 100mm VESA compatible
- 02** Horizontal range: 16" manual adjustment
- 03** 28" Height + 12" vertical movement (Electro-mechanical)
- 04** +20° / -10° Manual adjustment
- 05** Weight support up to 20 Lbs per monitor
- 06** All monitors for each workstation adjust as one unit





FEATURES

- 01** Improved air circulation and minimal noise
- 02** UL, CE, RoHS - Certified
- 03** Multi speed controller
- 04** Dimensions: 4.6 x 4.6 x 1.3 in
- 05** Airflow: 26 CFM
- 06** Noise: 17 dBA
- 07** Bearings: Dual-Ball



FEATURES

- 01** Compact Size
- 02** Easy access to power, data and usb ports
- 03** Discreet to reduce space waste
- 04** UL or ETL listed.
- 05** Customizable sizes and outlet configurations available (2-7 ports)

NON-POWERED

Cat6, Cat6A, HDMI, DisplayPort, DVI, Mini DisplayPort, Stereo Jack, Passive USB-A, and Passive USB-C

POWERED

USB-4C, Dual C+A, USB-C 60W, Dual USB-C 45W, USB A+C

POWER SIMPLEX

Tamper resistant & hospital grade available.



HEAVY DUTY MONITOR MOUNT

DIMENSIONS

Maximum Reach: 16.5 in. (41.91 cm)
 Post Diameter: 1.5 in. (3.81 cm)
 Post Length: 31.5 in. (80 cm)
 Fully Extended Arm:
 18.50 in. L x 4.50 in. W x 5.25 in. H
 Collapsed Arm:
 10.75 in. L x 6.75 in. W x 5.25 in. H
 System Dimensions:
 18.50 in. L x 4.50 in. W x 31.50 in. H

WEIGHT & CAPACITY

Payload Capacity: 55 lbs. (24.94 kg)
 Arm Weight: 5.8 lbs. (2.63 kg)
 System Weight: 11 lbs. (4.9 kg)

CONSTRUCTION

Durable 6061 T6 Aluminum
 Corrosion Resistant Stainless Steel



FEATURES

- 01** Payload Capacity of 55 lbs.
- 02** Locking Pan and Tilt
- 03** Locking Rosette Joints for Security
- 04** Locking Landscape and Portrait
- 05** Height Adjustable
- 06** 360 Degree Free Rotation
- 07** Integrated Cable Management
- 08** Post with 3/8"-16 Mounting Point

KEYBOARD AND MOUSE EQUIPMENT



FEATURES

- 01** Moves keyboard and mouse off the worksurface to save space
- 02** Mouse tray mounts on right left side
- 03** Sturdy and impact resistant

A keyboard sliding tray enhances workspace ergonomics by providing a sturdy, retractable platform for keyboards and mice. It optimizes desk space, promotes comfort, and reduces strain, making it ideal for all types of control rooms.



ARTICULATING MULTIPLE MONITOR ARM



Weight limit	30 lbs per monitor
VESA compatibility	75 mm/100 mm (100 mm/200 mm also available)
Warranty	10 years

FEATURES

- 01** Standard 28" pole / Longer poles available by special order
- 02** Horizontal adjustment of 14"
- 03** Monitor tilts 200°
- 04** Each arm features 3 pivot points with 360° of movement
- 05** Rotates easily from landscape to portrait viewing modes
- 06** Cable management system keeps cords organized and tucked away

Includes FLEXmount with 6 mounting options: desk clamp, through-desk, wall, reverse wall, grommet hole, and side bolt





FEATURES

- 01** Equipment mounting capabilities
- 02** Appealing aesthetic
- 03** Available in custom heights
- 04** Easy to clean and dust repellent
- 05** Available articulating arm mounts

FINISHING OPTIONS

- 01** Acoustic fabric
- 02** Plastic laminate
- 03** Wood veneer
- 04** Metal

CONFIGURED TO FIT YOUR NEEDS



Shelf Mount



Status Indicator lights



Monitor mounts



Power and data



Task Lights



FEATURES

- 01** Adjustable height
- 02** Allows for 32" to 70" monitor sizes
- 03** Supports up to 110lbs
- 04** Allows for monitor rotation

LOWERED POSITION



RAISED POSITION



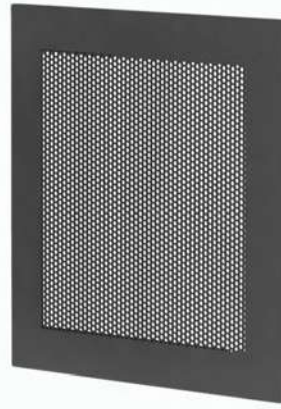


Laminate Panel

Metal Panel

Perforated Panel

Acoustic Panel



LAMINATE PANEL

- 01** High durability and resistance
- 02** Variety of finishes like solid colors, woodgrains, stones and even abstracts
- 03** Optional ventilations fans or louvers
- 04** Optional recessed handle and lock

METAL – FLAT & PERFORATED

- 01** 16 gauge cold rolled steel
- 02** Electrostatic powder coating for strong durability
- 03** Ample range of available finishing colors
- 04** Optional ventilations fans or louvers
- 05** Optional recessed handle and lock

ACOUSTIC PANEL

- 01** Low profile, tackable and durable
- 02** Large variety of fabric and trim colors
- 03** Sound absorption (ASTM C423) Noise
- 04** Reduction coefficient (NRC): 0.70 minimum



PEU Touch Control Unit – Kick space heater – Directional fans – Task light – PEU surge protection – Sit Stand Controls



FEATURES

- 01** White noise generator with volume control
- 02** Variable ventilation fan speed
- 03** On/Off functionality for baseboard heater, radiant heat panel, and task lights
- 04** Adjustable work surface height control
- 05** Programmable occupancy sensor
- 06** Built In surge protection with indicator light (on touch pad)
- 07** Touch pad control for (2) additional electrical outlets
- 08** SUB and WIFI capabilities for CPU connection

PLUG & PLAY POWER MANAGEMENT (DEKKO)



Self Grounding Receptacle

Isolated Ground Receptacle

DEKKO Assembly



FEATURES

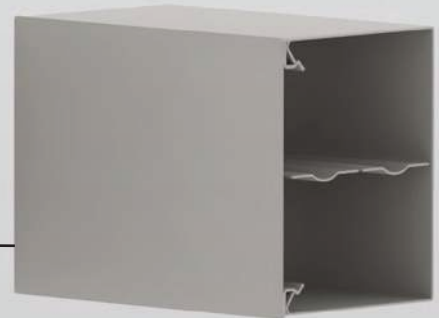
- 01** UL 183 (8-10 wire system)
- 02** 15 or 20 amp receptacles
- 03** International receptacles available
- 04** Multiple receptacle color options
- 05** 10 wire independent neutral
- 06** (3 Utility circuits, 1 dedicated)
(4-2-2)
- 07** 4 hot, 4 neutral and 2 ground



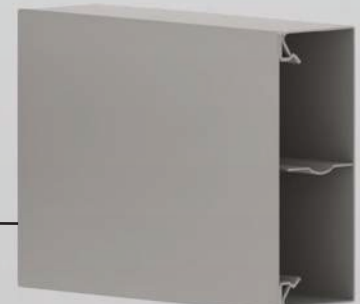
FEATURES

- 01** Lightweight multi-channel surface raceway
- 02** Dividers accommodate electrical, voice, video and fiber optic cabling
- 03** Fittings designed to maintain minimum 1" bend radius
- 04** Accepts all NEMA standard faceplate's and devices

4" X 4"



2" X 4"



2" X 2"



POWER BARS



STANDARD POWER BAR

- 01** Durable metal case with 6' cord. Outlets turned 90 degrees for AC adapters.
- 02** 6 outlet power distribution strip with lighted power switch/ breaker and surge suppression.
- 03** Attractive Mode display box.
- 04** Electrical Rating: 125VAC 15Amp cUL
- 05** Max. Surge Suppression: 250 Joules



HEAVY DUTY POWER BAR

- 01** All metal housing - tough extruded aluminum case with a black powder paint coated steel cover
- 02** 4, 6, 8 outlet bars available with straight or locking plug types
- 03** Heavy duty NEMA 5-15R or 5-20 receptacles
- 04** Heavy duty 14 gauge wire cord - 14/3 SJT type for extreme temperature ranges and integral molded plug
- 05** Includes 15 amp, 125 volt resettable circuit breaker to prevent accidental line overload
- 06** TAA compliant for GSA Schedule purchases. RoHS Compliant.
- 07** UL-CUL listed and manufactured in North America.



FEATURES

- 01** International receptacles available
- 02** Location Based on client needs
- 03** Multiple power connection options
- 04** Available in different colors
- 05** Power channel options available

**NEM 5-15
QUAD**



**NEMA 5-15
QUAD**



**NEMA 5-15
DUPLEX**

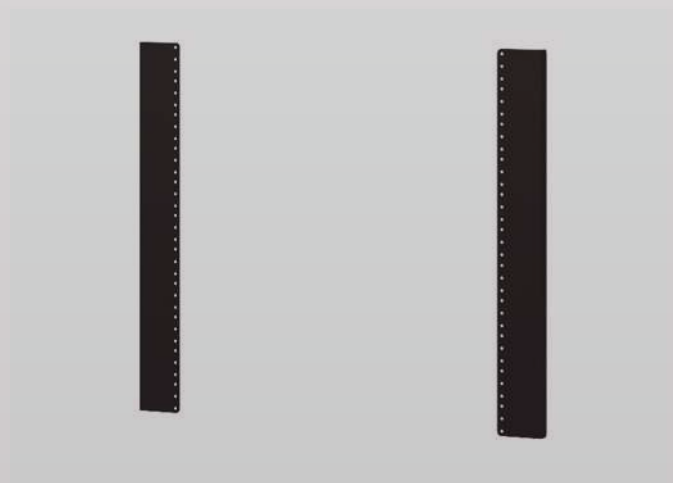
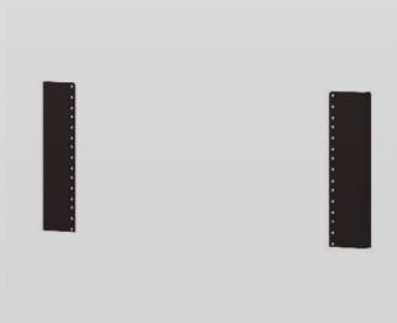


RACK MOUNT RAILS



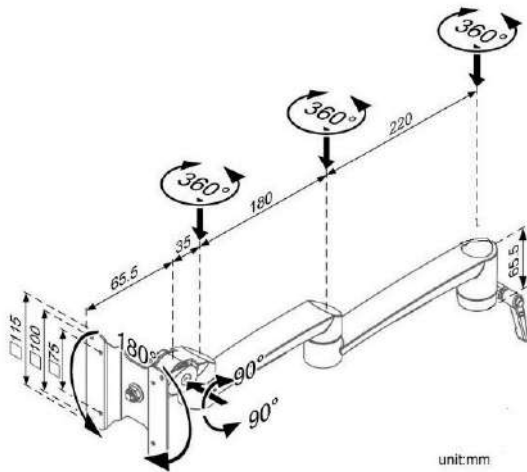
FEATURES

- 01** EIA Standard 19" rack mounting
- 02** Integrated into console frame structure
- 03** Heavy duty option available
- 04** 2 Point or 4 point rack rails available
- 05** Cold-Rolled 16-Gauge-Steel Construction
- 06** Powder coated finish

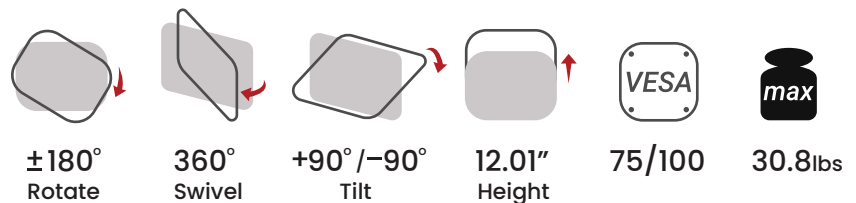
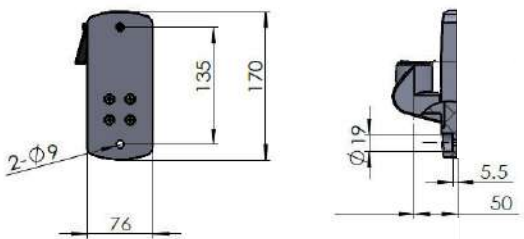


SINGLE & DUAL STACKED MONITOR ARMS

SWING ARM



WALL MOUNT



FA-200

Full motion

Place your monitor wherever you like with tilt, swivel and rotate movement.

Cable management

Enjoy an organized desktop.

Optional quick release VESA

Provide optional quick release VESA for easy installation when changing the application.

Ergonomic benefits

Boost efficiency at work and reduce the pressure on your neck, back, and eyes strain.

Multi screen setups

Effortless adjustment for different monitor position that meets your need.

Material	Aluminum and steel
Weight Capacity	~14 kg (30.8 lbs) per mount
Lift	Max. 305mm(12.01"), Min. 129.6mm(5.1")
Tilt	±90°
Rotation	±180°
Swivel	360°
Extension	Max. 500.5mm(19.7")
Mounting Option	Clamp
Fits Table Thickness	12~52mm (0.47"~2.05")
VESA	75/100/115mm
Pole	Ø30*305L



GENERAL FEATURES

- 01** Minimum to maximum screen size of 37" to 75"
- 02** VESA pattern 600 x 400
- 03** Black powder coat finish
- 04** Weight capacity 175 Lbs



REGULAR MOUNT

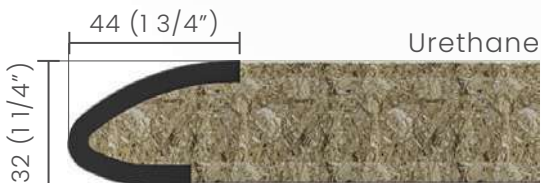
- 01** Distance from the wall 1.20"
- 02** Product dimensions: 30.87" x 16.89" x 1.20"



TILTING MOUNT

- 01** Distance from the wall 2.62" to 5.40"
- 02** Product dimensions: 30.87" x 16.89" x 1.20"

WORK SURFACE EDGE TREATMENT



Maximum protection for your operators against accidental contact with the work surface, while safeguarding your control room console from the wear and tear of 24/7 operations.

URETHANE FEATURES

- 01** Black finish
- 02** Impact and puncture resistant
- 03** For heavy use applications

VINYL FEATURES

- 01** Same features and finish as Urethane
- 02** Replaceable if damage occurs

WORKSTATION - PODIUM



FEATURES

- 01** 16 Gauge steel enclosures
- 02** Anti-glare tempered glass
- 03** Removable side and rear access panels
- 04** 100x100 and 75x75 VESA plate included
- 05** Adjustable CPU shelf
- 06** Fixed keyboard shelf pass trough holes
- 07** Ventilation fans for intake and exhaust with washable filters
- 08** Electrical and data (Boxes and outlets provided by others)